

EASIKIT

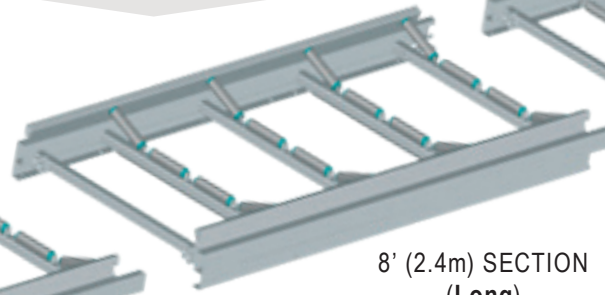
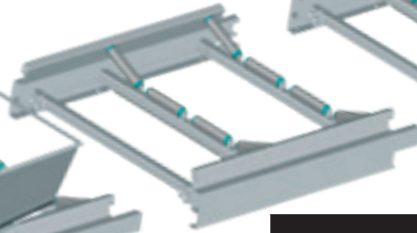
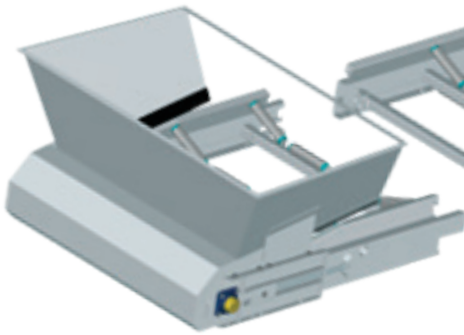
CONVEYORS

BASE TENSION UNIT
(Tail)

4' (1.2m) SECTION
(Short)

8' (2.4m) SECTION
(Long)

HEAD DRIVE UNIT
(Head)



EK1200

48" WIDE BELT CONVEYOR

High Performance
Modular Conveyors

EASIKIT modular conveyor systems offer an adaptable solution for virtually any application, being assembled with standard components and built to project-specific requirements.

- Same-Day Quotations
- Fast Availability
- Supplied Ready-to-Assemble
- Adaptable Modular Design
- Bolted Joints
- Robust Construction
- Durable Galvanized Finish
- **Safe by Design**

Ideal for construction work, civil work, and bulk handling.

EK1200 SECTIONS	Length (in)	Width (in)	Height (in)	Weight (lb)
Head Unit without motor (H)	59"	60"	12 1/4"	269
Head Unit with 3kW motor	59"	63 1/2"	12 1/4"	346
Base Tension Unit (T)	59"	52"	10"	265
4' (1.2m) Section	53 3/4"	48 1/4"	11 1/4"	119
8' (2.4m) Section	100"	48 1/4"	11 1/4"	221
Steel Hopper	37"	60 1/2"	20"	88

Length	Conveyor Section Combinations				Approx. Belt Length (ft)	Weight (lb)*
	Tail	Short	Long	Head		
9' (2.86m)	1	-	-	1	20' (6.1m)	748
13' (4.06m)	1	1	-	1	28' (8.5m)	922
17' (5.26m)	1	-	1	1	36' (10.9m)	1,076
21' (6.46m)	1	1	1	1	44' (13.3m)	1,248
25' (7.66m)	1	-	2	1	52' (15.7m)	1,404
29' (8.86m)	1	1	2	1	60' (18.1m)	1,577
33' (10.06m)	1	-	3	1	68' (20.5m)	1,905
37' (11.26m)	1	1	3	1	75' (22.9m)	2,077
41' (12.46m)	1	-	4	1	83' (25.3m)	2,405
45' (13.66m)	1	1	4	1	91' (27.7m)	2,577
49' (14.86m)	1	-	5	1	99' (30.1m)	2,906
Snub drum unit and 4kW 415v motor for lengths of 16.06m and over						
53' (16.06m)	1	1	5	1	107' (32.6m)	3,173
57' (17.26m)	1	-	6	1	115' (35m)	3,501
61' (18.46m)	1	1	6	1	123' (37.4m)	3,673
65' (19.66m)	1	-	7	1	131' (39.8m)	4,001
69' (20.86m)	1	1	7	1	139' (42.2m)	4,173
73' (22.06m)	1	-	8	1	146' (44.6m)	4,502
77' (23.26m)	1	1	8	1	154' (47m)	4,674
81' (24.46m)	1	-	9	1	162' (49.4m)	5,002
85' (25.66m)	1	1	9	1	170' (51.8m)	5,174

LONGER COMBINATIONS AVAILABLE

*Weights provided include plain belt and motor.; Allow 4.9' (1.5m) extra belt length for vulcanized belt joints; Maximum length of conveyor depends on application.

INTERQUIP
CONVEYORS

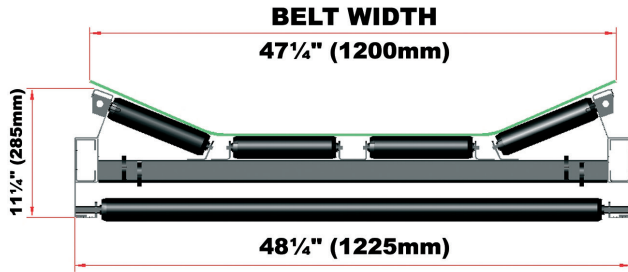
(203) 322-2600



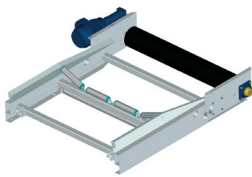
interquip.us/easikit-conveyors



info@interquip.net



Head Drive Unit



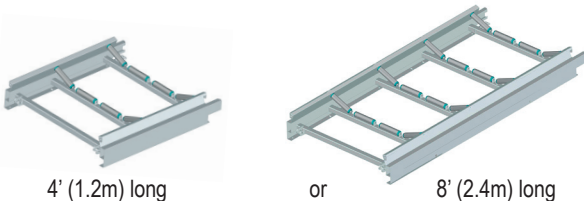
Incorporating 7.5" (190mm) diameter crowned diamond rubber lagged drive drum welded on to machined shaft with 1.37" (35mm) diameter keyed extension for attaching gearbox and motor. Mounted in self aligning bearings and complete with tracking adjustment.

Snub Head Drive Unit

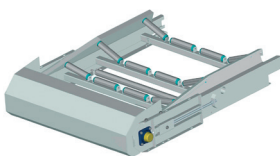


For longer conveyors (generally over 52' (16m) in length) with larger drive drum and snubbing roller. Incorporating 9.5" (240mm) diameter crowned diamond rubber lagged drive drum welded on to machined shaft with 1.65" (42mm) diameter keyed extension for attaching gearbox and motor. Mounted in self aligning bearings complete with tracking adjustment..

Intermediate Sections



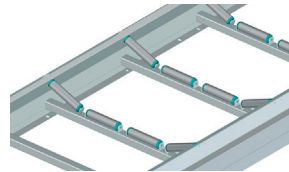
Base Tension Unit



With 6.5" (165mm) diameter crowned slatted idler drum welded on to machined shaft and mounted in self aligning bearings. Large amount of screw tension allows easy fitting and removal of belt.

Construction. Folded mild steel sections forming parallel box side members with RHS cross-bracing, hot dip galvanized for durability. Simple joints with two locating spigots and hook-and-coupling assembly which can be tightened using spanner or bar.

Idlers



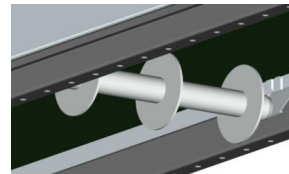
2" (50mm) diameter top rollers in sets at 24" (600mm) centers forming 20° 4-roll trough, bolted in slots to allow belt tracking adjustment.

Return Rollers



2" (50mm) diameter drop-in return rollers at 48" (1,200mm) centers.

Disc Return Rollers



Disc Return Rollers should be selected when using cleated belt. Fitted at 40" (1,000mm) centers.

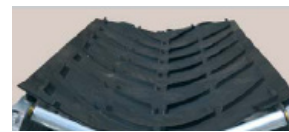
**Also recommended for use on plain belt to prevent material build up when handling sticky or difficult materials.*

Belt Options

48" (1200mm) wide 2-ply black rubber belts in the following styles:



a) **PLAIN** – for conveyors operating up to 20 degrees. Standard or Nitrile (oil resistant) for special applications.



b) **CHEVRON** –for conveyors operating up to 35 degrees. Fitted with 1/2" (15mm) chevron pattern.



c) **CLEATED** –for conveyors operating up to 45 degrees. Fitted with 2" (50mm) high cleats at 34" (860mm) pitch for conveyors operating at steeper inclines.