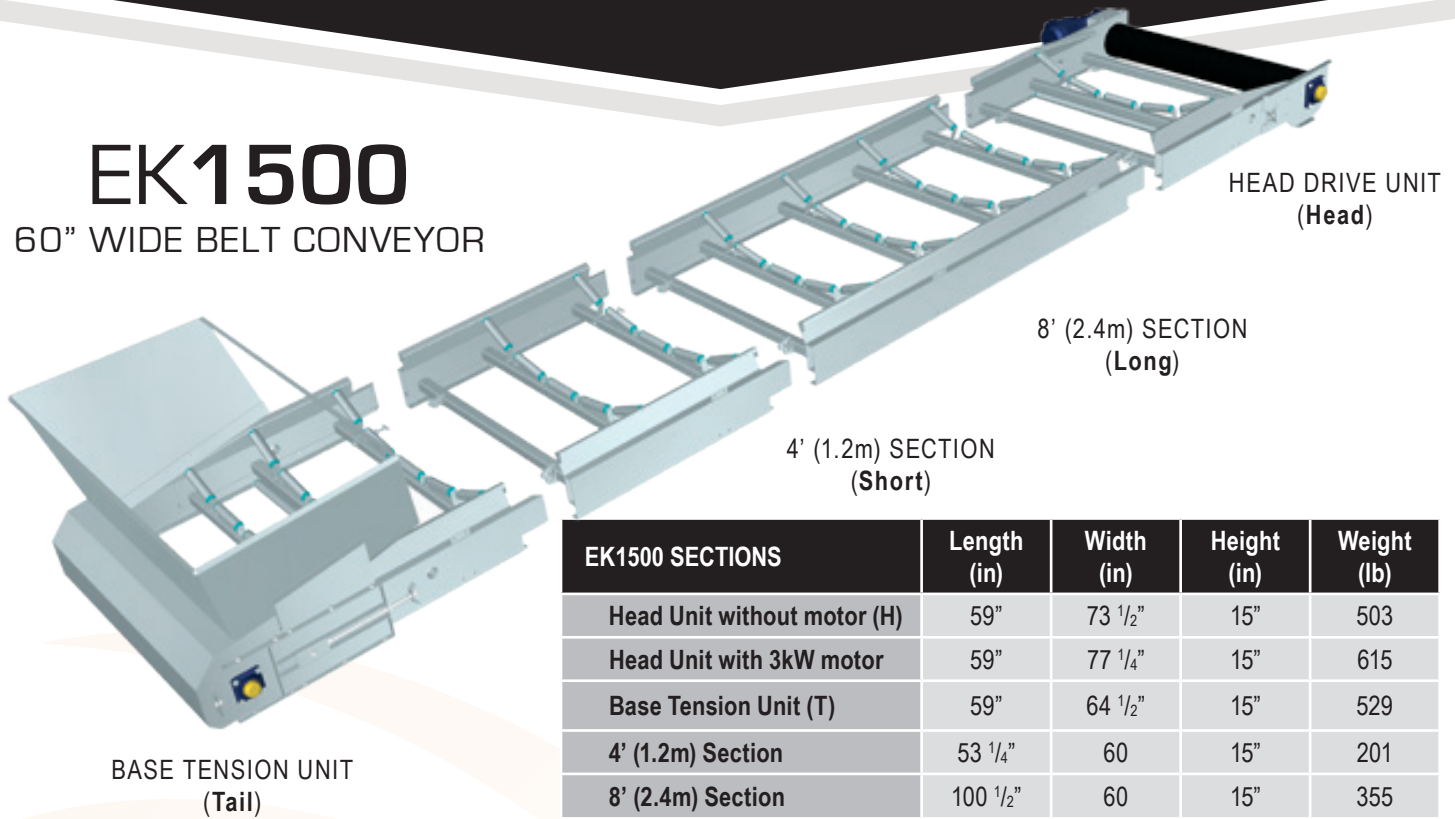


EK1500

60" WIDE BELT CONVEYOR



BASE TENSION UNIT
(Tail)

HEAD DRIVE UNIT
(Head)

8' (2.4m) SECTION
(Long)

4' (1.2m) SECTION
(Short)

High Performance Modular Conveyors

EASIKIT modular conveyor systems offer an adaptable solution for virtually any application, being assembled with standard components and built to project-specific requirements.

- Same-Day Quotations
- Fast Availability
- Supplied Ready-to-Assemble
- Adaptable Modular Design
- Bolted Joints
- Robust Construction
- Durable Galvanized Finish
- **Safe by Design**

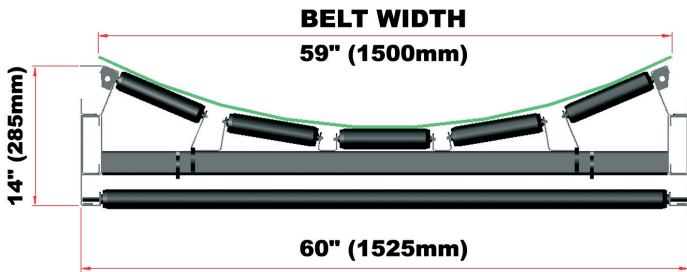
Ideal for construction work, civil work, and bulk handling.

EK1500 SECTIONS	Length (in)	Width (in)	Height (in)	Weight (lb)
Head Unit without motor (H)	59"	73 1/2"	15"	503
Head Unit with 3kW motor	59"	77 1/4"	15"	615
Base Tension Unit (T)	59"	64 1/2"	15"	529
4' (1.2m) Section	53 1/4"	60"	15"	201
8' (2.4m) Section	100 1/2"	60"	15"	355
Steel Hopper	37"	76 1/4"	24 3/4"	155

Length	Conveyor Section Combinations				Approx. Belt Length (ft)	Weight (lb)*
	Tail	Short	Long	Head		
9' (2.86m)	1	-	-	1	20' (6.1m)	1,193
13' (4.06m)	1	1	-	1	28' (8.5m)	1,457
17' (5.26m)	1	-	1	1	36' (10.9m)	1,675
21' (6.46m)	1	1	1	1	44' (13.3m)	1,940
25' (7.66m)	1	-	2	1	52' (15.7m)	2,158
29' (8.86m)	1	1	2	1	60' (18.1m)	2,423
33' (10.06m)	1	-	3	1	68' (20.5m)	2,641
37' (11.26m)	1	1	3	1	75' (22.9m)	2,906
41' (12.46m)	1	-	4	1	83' (25.3m)	3,124
45' (13.66m)	1	1	4	1	91' (27.7m)	3,388
49' (14.86m)	1	-	5	1	99' (30.1m)	3,607
53' (16.06m)	1	1	5	1	107' (32.6m)	3,871
57' (17.26m)	1	-	6	1	115' (35m)	4,090
61' (18.46m)	1	1	6	1	123' (37.4m)	4,354
65' (19.66m)	1	-	7	1	131' (39.8m)	4,572
69' (20.86m)	1	1	7	1	139' (42.2m)	4,837
73' (22.06m)	1	-	8	1	146' (44.6m)	5,055
77' (23.26m)	1	1	8	1	154' (47m)	5,320
81' (24.46m)	1	-	9	1	162' (49.4m)	5,538
85' (25.66m)	1	1	9	1	170' (51.8m)	5,803

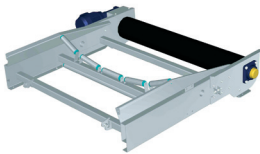
LONGER COMBINATIONS AVAILABLE

*Weights provided include plain belt and motor.; Allow 4.9' (1.5m) extra belt length for vulcanized belt joints; Maximum length of conveyor depends on application.



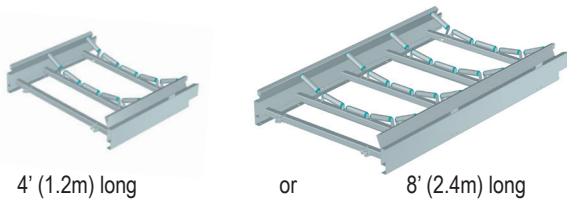
Construction. Folded mild steel sections forming parallel box side members with RHS cross-bracing, hot dip galvanized for durability. Simple joints with two locating spigots and hook-and-coupling assembly which can be tightened using spanner or bar.

Head Drive Unit



Incorporating 9.5" (240mm) diameter crowned diamond rubber lagged drive drum welded on to machined shaft with 1.65" (42mm) diameter keyed extension for attaching gearbox and motor. Mounted in self aligning bearings and complete with tracking adjustment.

Intermediate Sections

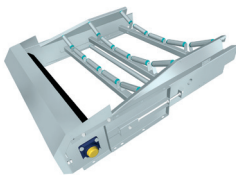


4' (1.2m) long

or

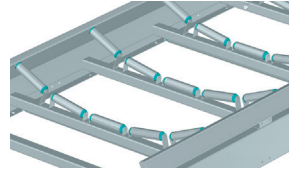
8' (2.4m) long

Base Tension Unit



Complete with 6.5" (165mm) diameter crowned slatted idler drum welded on to machined shaft and mounted in self aligning bearings. Large amount of screw tension allows easy fitting and removal of belt.

Idlers



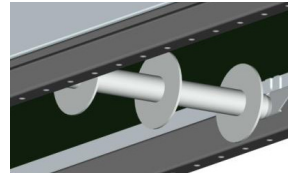
2" (50mm) diameter top rollers in sets at 24" (600mm) centers forming 20° 5-roll trough, bolted in slots to allow belt tracking adjustment.

Return Rollers



2" (50mm) diameter drop-in return rollers at 48" (1,200mm) centers.

Disc Return Rollers



Disc Return Rollers should be selected when using cleated belt. Fitted at 40" (1,000mm) centers.

**Also recommended for use on plain belt to prevent material build up when handling sticky or difficult materials.*

Belt Options

60" (1500mm) wide 2-ply black rubber belts in the following styles:



a) **PLAIN** – for conveyors operating up to 20 degrees. Standard or Nitrile (oil resistant) for special applications.



b) **CHEVRON** –for conveyors operating up to 35 degrees. Fitted with 1/2" (15mm) chevron pattern.



c) **CLEATED** –for conveyors operating up to 45 degrees. Fitted with 2" (50mm) high cleats at 34" (860mm) pitch for conveyors operating at steeper inclines.