

# EASIKIT

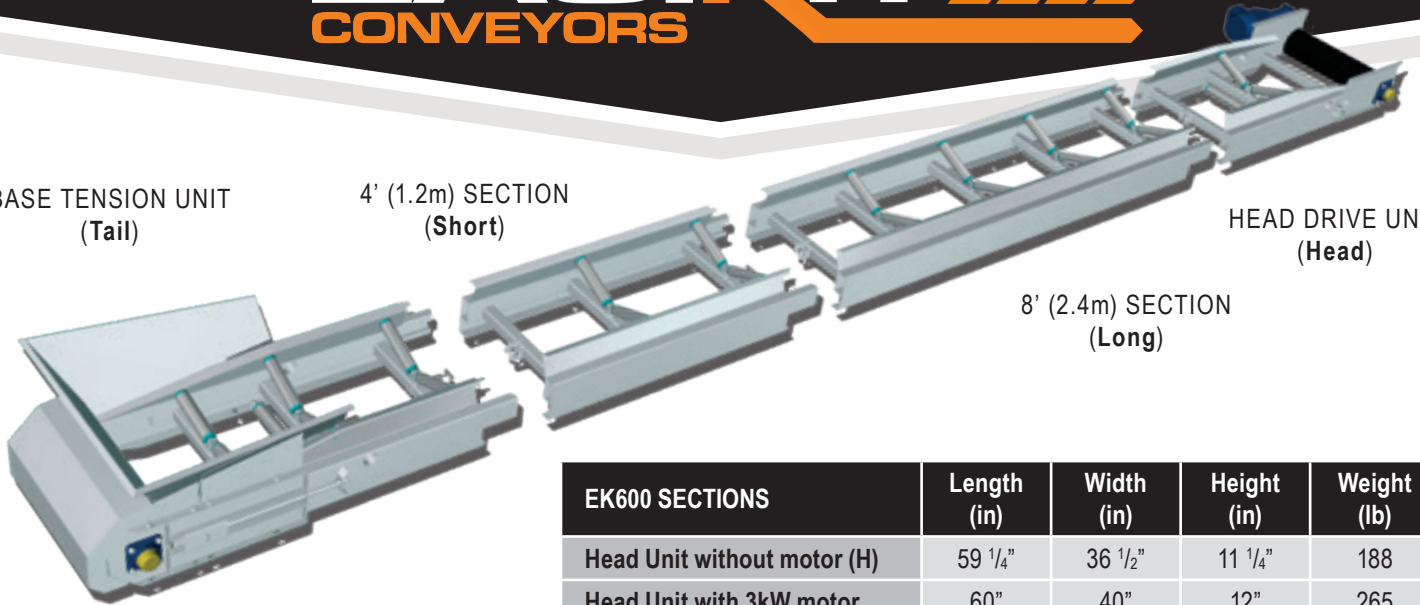
## CONVEYORS

BASE TENSION UNIT  
(Tail)

4' (1.2m) SECTION  
(Short)

HEAD DRIVE UNIT  
(Head)

8' (2.4m) SECTION  
(Long)



## EK600

### 24" WIDE BELT CONVEYOR

#### High Performance Modular Conveyors

EASIKIT modular conveyor systems offer an adaptable solution for virtually any application, being assembled with standard components and built to project-specific requirements.

- Same-Day Quotations
- Fast Availability
- Supplied Ready-to-Assemble
- Adaptable Modular Design
- Bolted Joints
- Robust Construction
- Durable Galvanized Finish
- **Safe by Design**

Ideal for construction work, civil work, and bulk handling.

EK600 SECTIONS	Length (in)	Width (in)	Height (in)	Weight (lb)
Head Unit without motor (H)	59 1/4"	36 1/2"	11 1/4"	188
Head Unit with 3kW motor	60"	40"	12"	265
Base Tension Unit (T)	60 3/4"	30"	11 1/4"	180
4' (1.2m) Section	53"	24 1/2"	11 1/4"	90
8' (2.4m) Section	100 1/2"	24 1/2"	11 1/4"	175
Small Steel Hopper	31"	33 1/2"	12"	35
Medium Steel Hopper	37"	37"	20"	66

Length	Conveyor Section Combinations				Approx. Belt Length (ft)	Weight (lb)*
	Tail	Short	Long	Head		
9' (2.86m)	1	-	-	1	20' (6.1m)	525
13' (4.06m)	1	1	-	1	28' (8.5m)	642
17' (5.26m)	1	-	1	1	36' (10.9m)	756
21' (6.46m)	1	1	1	1	44' (13.3m)	873
25' (7.66m)	1	-	2	1	52' (15.7m)	988
29' (8.86m)	1	1	2	1	60' (18.1m)	1,105
33' (10.06m)	1	-	3	1	68' (20.5m)	1,220
37' (11.26m)	1	1	3	1	75' (22.9m)	1,336
41' (12.46m)	1	-	4	1	83' (25.3m)	1,450
45' (13.66m)	1	1	4	1	91' (27.7m)	1,568
49' (14.86m)	1	-	5	1	99' (30.1m)	1,682
<b>Snub drum unit and 4kW 415v motor for lengths of 16.06m and over</b>						
53' (16.06m)	1	1	5	1	107' (32.6m)	1,924
57' (17.26m)	1	-	6	1	115' (35m)	2,040
61' (18.46m)	1	1	6	1	123' (37.4m)	2,156
65' (19.66m)	1	-	7	1	131' (39.8m)	2,271
69' (20.86m)	1	1	7	1	139' (42.2m)	2,388
73' (22.06m)	1	-	8	1	146' (44.6m)	2,502
77' (23.26m)	1	1	8	1	154' (47m)	2,619
81' (24.46m)	1	-	9	1	162' (49.4m)	2,734
85' (25.66m)	1	1	9	1	170' (51.8m)	2,851

LONGER COMBINATIONS AVAILABLE

\*Weights provided include plain belt and motor.; Allow 3.3' (1m) extra belt length for vulcanized belt joints; Maximum length of conveyor depends on application.

## INTERQUIP

### CONVEYORS

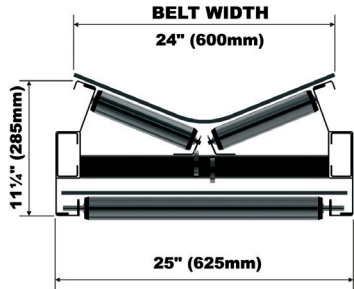
(203) 322-2600



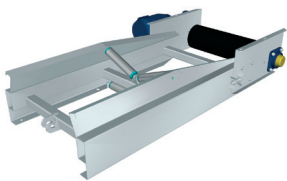
interquip.us/easikit-conveyors



info@interquip.net

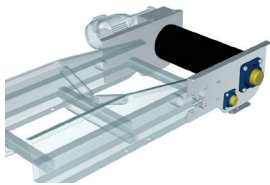


**Head Drive Unit**



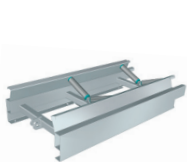
Incorporating 7.5" (190mm) diameter crowned diamond rubber lagged drive drum welded on to machined shaft with 1.37" (35mm) diameter keyed extension for attaching gearbox and motor. Mounted in self aligning bearings and complete with tracking adjustment.

**Snub Head Drive Unit**

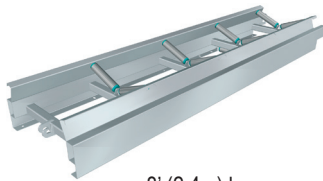


For longer conveyors (generally over 52' (16m) in length) with larger drive drum and snubbing roller. Incorporating 9.5" (240mm) diameter crowned diamond rubber lagged drive drum welded on to machined shaft with 1.65" (42mm) diameter keyed extension for attaching gearbox and motor. Mounted in self aligning bearings complete with tracking adjustment..

**Intermediate Sections**

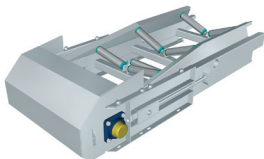


4' (1.2m) long



or 8' (2.4m) long

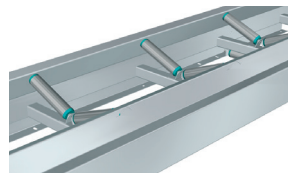
**Base Tension Unit**



With 6.5" (165mm) diameter crowned slatted idler drum welded on to machined shaft and mounted in self aligning bearings. Large amount of screw tension allows easy fitting and removal of belt.

**Construction.** Folded mild steel sections forming parallel box side members with RHS cross-bracing, hot dip galvanized for durability. Simple joints with two locating spigots and hook-and-coupling assembly which can be tightened using spanner or bar.

**Idlers**



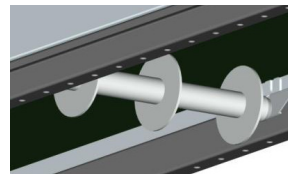
2" (50mm) diameter top rollers in pairs at 24" (600mm) centers forming 20° trough, bolted in slots to allow belt tracking adjustment.

**Return Rollers**



2" (50mm) diameter drop-in return rollers at 48" (1,200mm) centers.

**Disc Return Rollers**



Disc Return Rollers should be selected when using cleated belt. Fitted at 40" (1,000mm) centers.

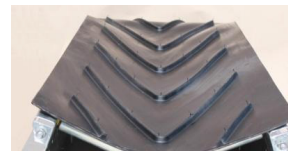
*\*Also recommended for use on plain belt to prevent material build up when handling sticky or difficult materials.*

**Belt Options**

24" (600mm) wide 2-ply black rubber belts in the following styles:



a) **PLAIN** – for conveyors operating up to 20 degrees. Standard or Nitrile (oil resistant) for special applications.



b) **CHEVRON** –for conveyors operating up to 35 degrees. Fitted with 1/2" (15mm) chevron pattern.



c) **CLEATED** –for conveyors operating up to 45 degrees. Fitted with 2" (50mm) high cleats at 20" (500mm) pitch for conveyors operating at steeper inclines.